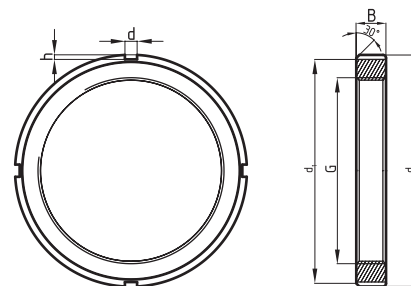


MATICE

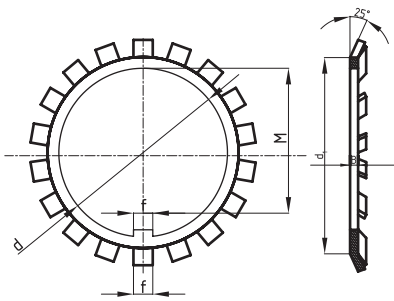
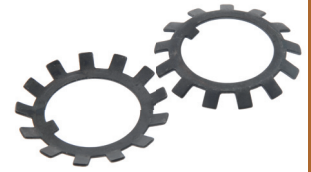


Skupina: 22

Oznake in njihove definicije

G	d1	d3	B	d	h	Označba
M 12x1	17	22	4	3	2	KM 1
M 15x1	21	25	5	4	2	KM 2
M 17x1	24	28	5	4	2	KM 3
M 20x1	26	32	6	4	2	KM 4
M 25x1,5	32	38	7	5	2	KM 5
M 30x1,5	38	45	7	5	2	KM 6
M 35x1,5	44	52	8	6	2	KM 7
M 40x1,5	50	58	9	6	2,5	KM 8
M 45x1,5	56	65	10	6	2,5	KM 9
M 50x1,5	61	70	11	6	2,5	KM 10
M 55x2	67	75	11	7	3	KM 11
M 60x2	73	80	11	7	3	KM 12
M 65x2	79	85	12	7	3	KM 13
M 70x2	85	92	12	8	3,5	KM 14
M 75x2	90	98	13	8	3,5	KM 15
M 80x2	95	105	15	8	3,5	KM 16
M 85x2	102	110	16	8	3,5	KM 17
M 90x2	108	120	16	10	4	KM 18
M 95x2	113	125	17	10	4	KM 19
M 100x2	120	130	18	10	4	KM 20
M 105x2	126	140	18	12	5	KM 21
M 110x2	133	145	19	12	5	KM 22
M 115x2	137	150	19	12	5	KM 23
M 120x2	138	155	20	12	5	KM 24
M 125x2	148	160	21	12	5	KM 25
M 130x2	149	165	21	12	5	KM 26
M 135x2	160	175	22	14	6	KM 27
M 140x2	160	180	22	14	6	KM 28
M 145x5	172	190	24	14	6	KM 29*
M 150x2	171	195	24	14	6	KM 30*
M 155x3	182	200	25	16	7	KM 31*
M 160x3	182	210	25	16	7	KM 32*
M 165x2	193	210	26	16	7	KM 33*
M 170x3	193	220	26	16	7	KM 34*
M 180x3	203	230	27	18	8	KM 36*
M 190x3	214	240	28	18	8	KM 38*
M 200x3	226	250	29	18	8	KM 40*

* Po ponudbi



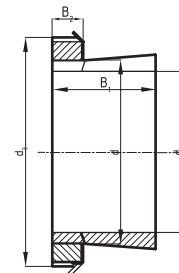
d	d1	d3	B	f	M	Označba
12	17	25	1	3	10,5	MB 1
15	21	28	1	4	13,5	MB 2
17	24	32	1	4	15,5	MB 3
20	26	36	1	4	18,5	MB 4
25	32	42	1,25	5	23	MB 5
30	38	49	1,25	5	27,5	MB 6
35	44	57	1,25	6	32,5	MB 7
40	50	62	1,25	6	37,5	MB 8
45	56	69	1,25	6	42,5	MB 9
50	61	74	1,25	6	47,5	MB 10
55	67	81	1,25	8	52,5	MB 11
60	73	86	1,5	8	57,5	MB 12
65	79	92	1,5	8	62,5	MB 13
70	85	98	1,5	8	66,5	MB 14
75	90	104	1,5	8	71,5	MB 15
80	95	112	1,75	10	76,5	MB 16
85	102	119	1,75	10	81,5	MB 17
90	108	126	1,75	10	86,5	MB 18
95	113	133	1,75	10	91,5	MB 19
100	120	142	1,75	12	96,5	MB 20
105	126	145	1,75	12	100,5	MB 21
110	133	154	1,75	12	105,5	MB 22
115	137	159	2	12	110,5	MB 23
120	138	164	2	14	115	MB 24
125	148	170	2	14	120	MB 25
130	149	175	2	14	125	MB 26
135	160	185	2	14	130	MB 27
140	160	192	2	16	135	MB 28
145	172	202	2	16	140	MB 29*
150	171	205	2	16	145	MB 30*
155	182	212	2,5	16	147,5	MB 31*
160	182	217	2,5	18	154	MB 32*
165	193	222	2,5	18	157,5	MB 33*
170	193	232	2,5	18	164	MB 34*
180	203	242	2,5	20	174	MB 36*
190	214	252	2,5	20	184	MB 38*
200	226	262	2,5	20	194	MB 40*

Skupina: 22

Oznake in njihove definicije

* Po ponudbi

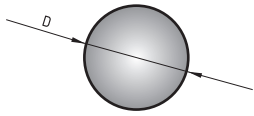
PUŠE



Skupina: 22

Oznake in njihove definicije

d1	d	d3	B1	B2	G	Označba		
17	20	32	24	7	M 20X1	H 204	KM 4	MB 4
		32	28	7	M 20X1	H 304	KM 4	MB 4
20	25	38	26	8	M 25X1,5	H 205	KM 5	MB5
		38	29	8	M 25X1,5	H 305	KM 5	MB5
		38	35	8	M 25X1,5	H 2305	KM 5	MB5
25	30	45	27	8	M 30X1,5	H 206	KM 6	MB 6
		45	31	8	M 30X1,5	H 306	KM 6	MB 6
		45	38	8	M 30X1,5	H 2306	KM 6	MB 6
30	35	52	29	9	M 35X1,5	H 207	KM 7	MB 7
		52	35	9	M 35X1,5	H 307	KM 7	MB 7
		52	43	9	M 35X1,5	H 2307	KM 7	MB 7
35	40	58	31	10	M 40X1,5	H 208	KM 8	MB 8
		58	36	10	M 40X1,5	H 308	KM 8	MB 8
		58	46	10	M 40X1,5	H 2308	KM 8	MB 8
40	45	65	33	11	M 45X1,5	H 209	KM 9	MB 9
		65	39	11	M 45X1,5	H 309	KM 9	MB 9
		65	50	11	M 45X1,5	H 2309	KM 9	MB 9
45	50	70	35	12	M 50X1,5	H 210	KM 10	MB 10
		70	42	12	M 50X1,5	H 310	KM 10	MB 10
		70	55	12	M 50X1,5	H 2310	KM 10	MB 10
50	55	75	37	12	M 55X2	H 211	KM 11	MB 11
		75	45	12	M 55X2	H 311	KM 11	MB 11
		75	59	12	M 55X2	H 2311	KM 11	MB 11
55	60	80	38	13	M 60X2	H 212	KM 12	MB 12
		80	47	13	M 60X2	H 312	KM 12	MB 12
		80	62	13	M 60X2	H 2312	KM 12	MB 12
60	65	85	40	14	M 65X2	H 213	KM 13	MB 13
		85	50	14	M 65X2	H 313	KM 13	MB 13
	70	92	52	14	M 70X2	H 314	KM 14	MB 14
		92	68	14	M 70X2	H 2314	KM 14	MB 14
65	75	98	43	15	M 75X2	H 215	KM 15	MB 15
		98	55	15	M 75X2	H 315	KM 15	MB 15
		98	73	15	M 75X2	H 2315	KM 15	MB 15
70	80	105	46	17	M 80X2	H 216	KM 16	MB 16
		105	59	17	M 80X2	H 316	KM 16	MB 16
		105	78	17	M 80X2	H 2316	KM 16	MB 16
75	85	110	50	18	M 85X2	H 217	KM 17	MB 17
		110	63	18	M 85X2	H 317	KM 17	MB 17
		110	82	18	M 85X2	H 2317	KM 17	MB 17
80	90	120	52	18	M 90X2	H 218	KM 18	MB 18
		120	65	18	M 90X2	H 318	KM 18	MB 18
		120	86	18	M 90X2	H 2318	KM 18	MB 18
85	95	125	55	19	M 95X2	H 219	KM 19	MB 19
		125	68	19	M 95X2	H 319	KM 19	MB 19
		125	90	19	M 95X2	H 2319	KM 19	MB 19
90	100	130	58	20	M 100X2	H 220	KM 20	MB 20
		130	71	20	M 100X2	H 320	KM 20	MB 20
		130	97	20	M 100X2	H 2320	KM 20	MB 20
95	105	140	60	20	M 105X2	H 221	KM 21	MB 21
		140	74	20	M 105X2	H 321	KM 21	MB 21
100	110	145	63	21	M 110X2	H 222	KM 22	MB 22
		145	77	21	M 110X2	H 322	KM 22	MB 22
		145	105	21	M 110X2	H 2322	KM 22	MB 22
110	120	155	112	22	M 120X2	H 2324	KM 24	MB 24
115	130	165	121	23	M 130X2	H 2326	KM 26	MB 26
125	140	180	131	24	M 140X2	H 2328	KM 28	MB 28
135	150	195	139	26	M 150X2	H 2330	KM 30	MB 30
140	160	210	147	28	M 160X3	H 2332	KM 32	MB 32
150	170	220	154	29	M 170X3	H 2334	KM 34	MB 34
160	180	230	161	30	M 180X3	H 2336	KM 36	MB 36
170	190	240	169	31	M 190X3	H 2338	KM 38	MB 38
180	200	250	176	32	M 200X3	H 2340	KM 40	MB 40



mm	colska mera COLA
0,400	-
0,500	-
0,600	-
0,635	-
0,700	-
0,800	-
1,000	-
1,200	-
1,500	-
1,588	1/16
2,000	-
2,381	3/32
2,500	-
2,778	7/64
3,000	-
3,175	1/8
3,500	-
3,969	5/32
4,000	-
4,500	-
4,762	3/16
5,000	-
5,500	-
5,556	7/32
6,000	-
6,350	1/4
6,500	-
7,000	-
7,144	9/32
7,500	-
7,938	5/16
8,000	-
8,500	-
8,731	11/32
9,000	-
9,525	3/8
10,000	-
10,319	13/32
11,000	-
11,112	7/16
11,500	-
11,906	15/32
12,000	-

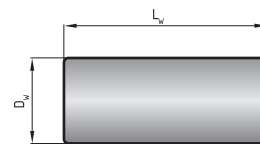
mm	colska mera COLA
12,700	1/2
13,000	-
13,494	17/32
14,000	-
14,288	9/16
15,000	-
15,081	-
15,875	-
16,000	-
17,000	-
17,462	11/16
18,000	-
19,000	-
19,050	3/4
19,844	25/32
20,000	-
21,000	-
22,000	-
22,225	7/8
23,000	-
24,000	-
25,000	-
25,400	1
26,000	-
27,781	1 3/32
28,000	-
30,000	-
31,750	1 1/4
32,000	-
32,544	1 9/32
33,338	1 5/16
34,000	-
34,925	1 3/8
35,000	-
35,719	1 13/32
36,000	-
36,512	1 7/16
38,000	-
38,100	1 1/2
39,688	1 9/16
40,000	-
41,275	1 5/8
42,862	1 11/16

mm	colska mera COLA
44,450	1 3/4
45,000	-
46,038	1 13/16
47,625	1 7/8
49,212	1 15/16
50,000	-
50,800	2
52,388	2 1/16
53,975	2 1/8
55,000	-
57,150	2 1/4
60,000	-
60,325	2 3/8
61,912	2 7/16
63,500	2 1/2
65,000	-
66,675	2 5/8
69,850	2 3/4
73,025	2 7/8
75,000	-
76,200	3
79,375	3 1/8
80,000	-
82,550	3 1/4
85,725	3 3/8
88,900	3 1/2
90,000	-
92,075	3 5/8
95,250	3 3/4
98,425	3 7/8
100,000	-
101,600	4
104,775	4 1/8
107,950	4 1/4
108,000	-
110,000	-
111,125	4 3/8
114,300	4 1/2
120,000	-
127,000	-
150,000	-

Skupina: 6

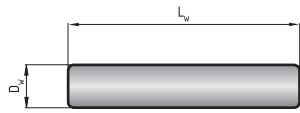
Oznake in njihove definicije

VALJČKI



Oznake in njihove definicije

Simbol	Dimenzije	
	D _w	L _w
6,0 x 8,0	6,0	8,0
6,0 x 8,5	6,0	8,5
6,0 x 9,0	6,0	9,0
6,0 x 10,0	6,0	10,0
6,0 x 12,0	6,0	12,0
6,5 x 6,5	6,5	6,5
6,5 x 8,0	6,5	8,0
6,5 x 9,0	6,5	9,0
6,5 x 11,0	6,5	11,5
7,0 x 7,0	7,0	7,0
7,0 x 10,0	7,0	10,0
7,0 x 14,0	7,0	14,0
7,0 x 17,0	7,0	17,0
7,5 x 7,5	7,5	7,5
7,5 x 9,0	7,5	9,0
7,5 x 10,0	7,5	10,0
7,5 x 11,0	7,5	11,0
8,0 x 8,0	8,0	8,0
8,0 x 10,0	8,0	10,0
8,0 x 12,0	8,0	12,0
8,0 x 13,0	8,0	13,0
8,0 x 14,0	8,0	14,0
8,0 x 16,0	8,0	16,0
8,0 x 20,0	8,0	20,0
9,0 x 9,0	9,0	9,0
9,0 x 10,0	9,0	10,0
9,0 x 12,0	9,0	12,0
9,0 x 13,0	9,0	13,0
9,0 x 14,0	9,0	14,0
10,0 x 10,0	10,0	10,0
10,0 x 11,0	10,0	11,0
10,0 x 12,0	10,0	12,0
10,0 x 14,0	10,0	14,0



Simbol	Dimenzije	
	D_w	L_w
2,0 x 4,8	2,0	4,8
2,0 x 6,3	2,0	6,3
2,0 x 6,8	2,0	6,8
2,0 x 7,8	2,0	7,8
2,0 x 9,8	2,0	9,8
2,0 x 11,8	2,0	11,8
2,0 x 13,8	2,0	13,8
2 x 15,8	2,0	15,8
2 x 17,8	2,0	17,8
2 x 19,8	2,0	19,8
2,5 x 7,8	2,5	7,8
2,5 x 9,8	2,5	9,8
2,5 x 11,8	2,5	11,8
2,5 x 13,8	2,5	13,8
2,5 x 15,8	2,5	15,8
2,5 x 17,8	2,5	17,8
2,5 x 19,8	2,5	19,8
2,5 x 21,8	2,5	21,8
2,5 x 23,8	2,5	23,8
3 x 9,8	3,0	9,8
3 x 11,8	3,0	11,8
3 x 13,8	3,0	13,8
3 x 15,8	3,0	15,8
3 x 17,8	3,0	17,8
3 x 19,8	3,0	19,8
3 x 21,8	3,0	21,8
3 x 23,8	3,0	23,8
3 x 25,8	3,0	25,8
3 x 27,8	3,0	27,8
3 x 29,8	3,0	29,8

Oznake in njihove definicije